



HOSHIZAKI

CERTIFICATION



HACCP International



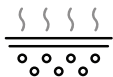
ISO9001

HR-76MA-SLG

UPRIGHT LONG GLASS DOOR REFRIGERATOR



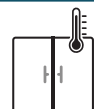
Key Features



Forced Evaporation System



LED Interior Lighting

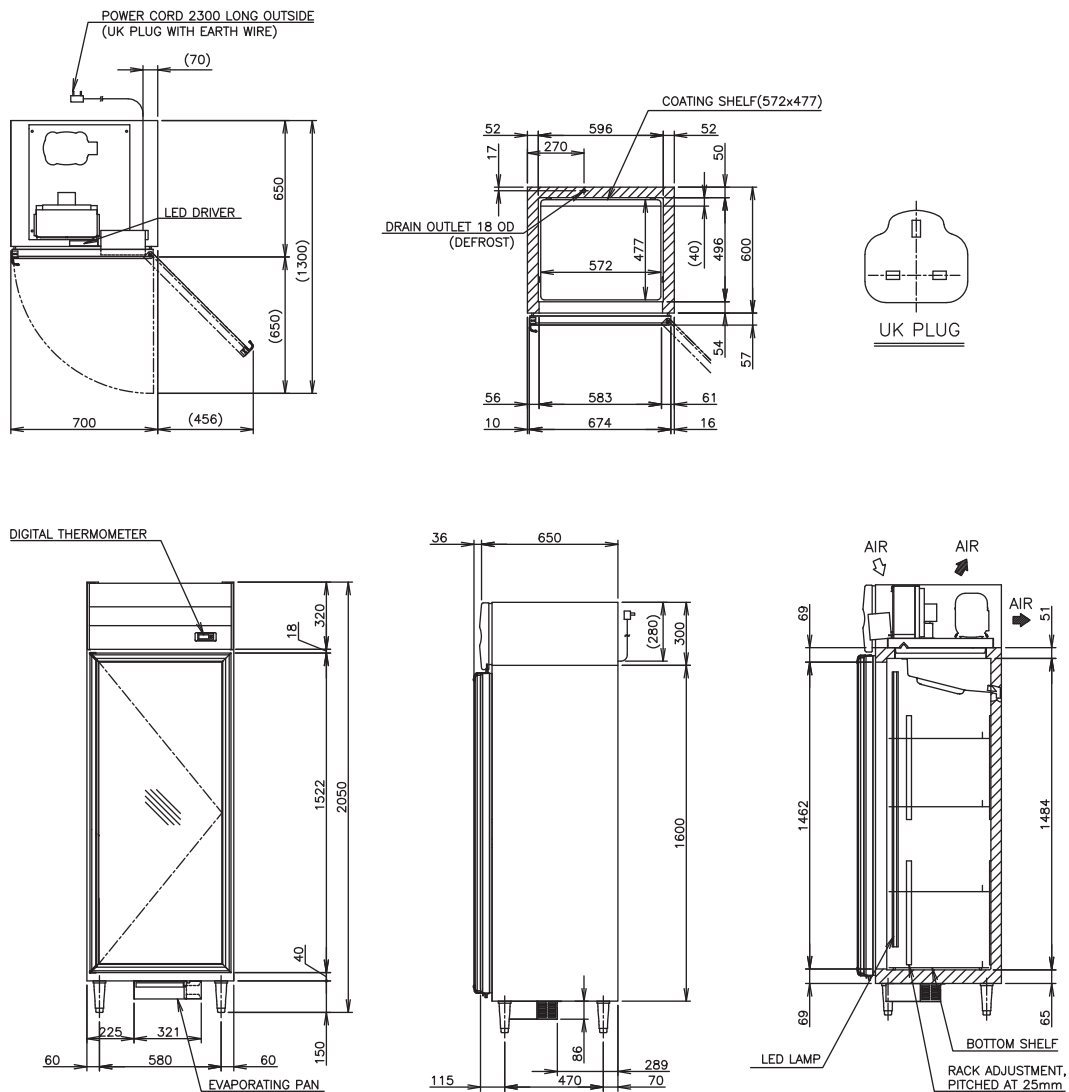


Glass Door with Heater

Our A-fit cabinet combines functionality and excellent energy performance to meet Japan quality level with precise temperature control to ensure food ingredient freshness at all time.



Dimensions & Specifications



MODEL	HR-76MA-SLG
POWER SUPPLY	1 Phase 230V 50Hz
ELECTRIC CONSUMPTION	Heater: 463W, Defrost: 250W
TEMPERATURE CONTROL	Microprocessor (Digital Temp. Indication) Adjustable from -2 to 12° C
EFFECTIVE CAPACITY	467L
WEIGHT	Net: 99kg (Gross 118kg)
OUTSIDE DIMENSIONS	700mm(W)× 650mm(D)×2050(-2080)mm(H)
PACKAGE	Carton: (Wooden Pallet) 760mm(W)×750mm(D)×2075mm(H)
AMPERAGE	Rated: 3.2A
SHELF	4 pcs
OPERATING CONDITIONS	Ambient Temperature: 5 - 38°C, Voltage Range: Rated Voltage ±6%



HOSHIZAKI

HOSHIZAKI SINGAPORE PTE LTD

18 Boon Lay Way #01-102 Tradehub21, Singapore, 609966

TEL 6225 2612 FAX 6225 3219 www.hoshizaki.com.sg

