



# Strong Carbonation

## CARBONATED WATER DISPENSER

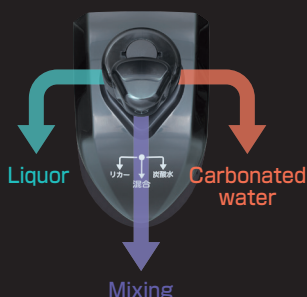
### Strong Carbonation **5.5GV**

In response to customer requests, we have achieved a strong carbonation of 5.5GV.



#### Dispense high-quality & strong carbonated drink with one action

The newly developed post-mix valve enables three actions with a single lever; dispensing liquor, mixing, and carbonated water. It is easy to use and allows smooth operation for anyone.



#### Significant increase in gas volume to 5.5GV

The newly developed post-mix valve can provide strong carbonation, providing customers with a long-lasting refreshing feeling.



GV (Gas Volume): Refers to the amount of carbon dioxide gas dissolved in a liquid, expressed as a multiple of the liquid's volume under standard atmospheric pressure (1 atmosphere) and at a water temperature of 15.6°C. For example, 5.5 GV means 5.5 times the volume of carbon dioxide is dissolved in the liquid.

**HOSHIZAKI**



## Carbonated Water



## Liquor

The drinks menu is enriched with Hoshizaki carbonated water dispenser. Carbonated water and Highball (Whisky Soda), etc. can be dispensed.

### Both Undercounter & Countertop model available

Hoshizaki offer both standard countertop and undercounter type that makes effective use of available space. You can choose the type that best suits your store's layout and atmosphere.

### Compact high-performance design

By the cooling water from the body to the valve, Hoshizaki Carbonated water dispenser can dispense cold drinks quickly anytime.

Dispensing capacity per day

25L

**DS-25WLD**

Gas volume  
5.56V

Dispensing beverages

Carbonated water×2

Liquor×2

Alcoholic carbonated drinks×2

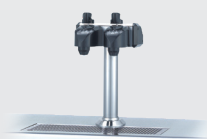
Built-in carbonator

POWER SUPPLY	1 Phase 100V 50/60Hz
ELECTRIC CONSUMPTION	250 / 295W
DISPENSING CAPACITY	25L (Both tap total) (25°C→8°C / 6h) (Carbonated water: Liquor = 2 : 1)
BEVERAGE CIRCUIT	2 Carbonated drink circuits (2 x Carbonated water, 2 x Liquor)
WEIGHT	35 kg (Including cooling water: approx. 45kg)

#### Countertop type



OUTSIDE DIMENSIONS W260 x D580 x H660 mm  
INSTALLATION SPACE W260 x D580 x H1080 mm



#### Undercounter type

OUTSIDE DIMENSIONS W260 x D496 x H716 mm  
INSTALLATION SPACE W260 x D580 x H736 mm

■ Built-in cooling circulation function  
※ Only hoses are required  
The carbonated water is kept cool by the cooling circulation.

#### Front view

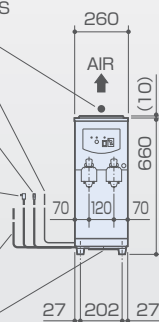
AT LEAST 40CM SPACE FOR VENTILATION AT THE TOP IS REQUIRED

EARTH WIRE  
2800 LONG OUTSIDE  
BUZZER CABLE  
2400 LONG OUTSIDE

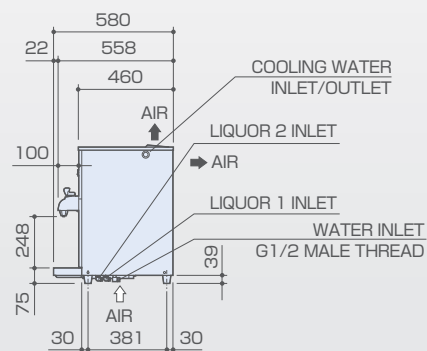
POWER CORD  
2800 LONG OUTSIDE  
(WITH L-SHAPED PLUG)

BEVERAGE CIRCUIT  
700 LONG OUTSIDE

AIR FILTER  
SLIDING TYPE



#### Side view



#### Front view

EARTH WIRE  
2800 LONG OUTSIDE

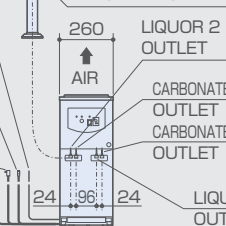
BUZZER CABLE  
2400 LONG OUTSIDE

POWER CORD  
2800 LONG OUTSIDE  
(WITH L-SHAPED PLUG)

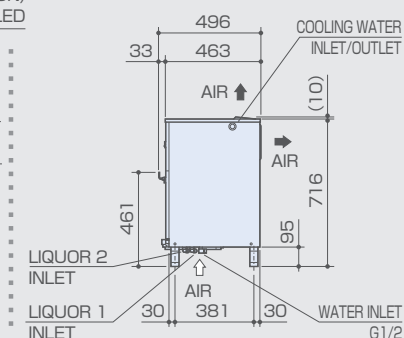
BEVERAGE CIRCUIT  
700 LONG OUTSIDE

AIR FILTER  
SLIDING TYPE

POSTMIX  
DRAFT TOWER / WPD (OPTION)  
※ CLAMP CAN BE INSTALLED



#### Side view



**PT. HOSHIZAKI INDONESIA**

Kirana Boutique Office Kirana Avenue 2 Blok C2 No. 6 Jl. Raya Boulevard No.1 Kelapa Gading.  
Jakarta Utara, DKI Jakarta, Indonesia 14240  
TEL +62-21-2937 5551/2 FAX +62 21 2937 5553 <https://hoshizaki.co.id/>