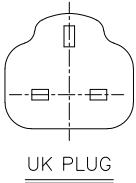
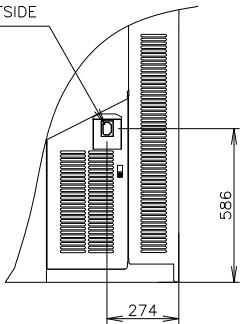
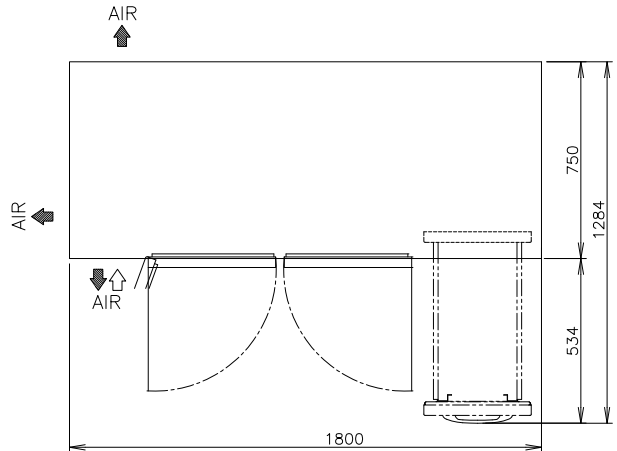


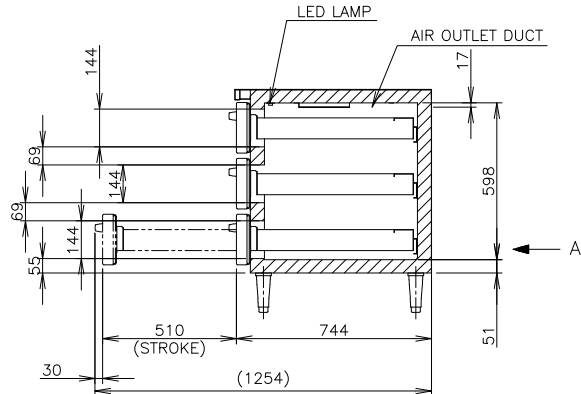
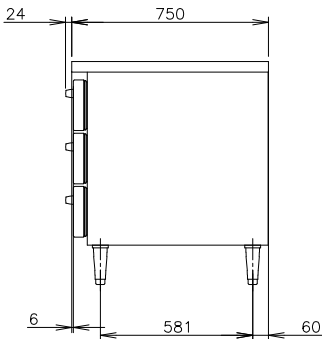
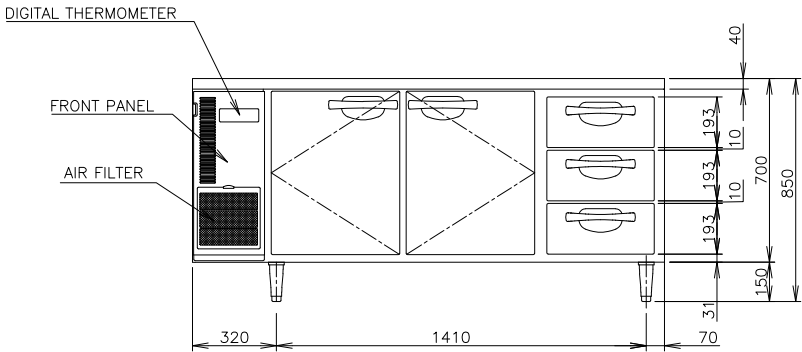
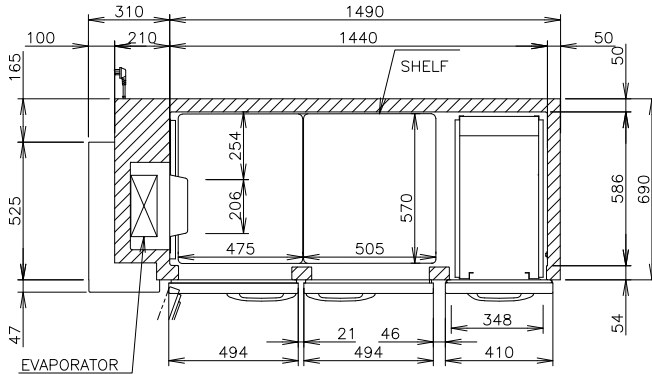
POWER CORD 2000 LONG OUTSIDE



VIEW A (1/10)



1. Install the product properly in accordance with the instructions on location, electrical connections stated in the instruction manual provided. Allow 10mm extra space at the installation site to meet any installation requirements (additional spacing is also required for proper air flow and pipe connections).
2. The heat rejection is based on the reached pulldown temperature at ambient temperature of 38°C and power supply of 230V 50Hz. The amperage and electric consumption are based on measurements at ambient temperature of 38°C and power supply of 230V 50Hz.
3. The cabinet temperature range of -23 to -7°C guaranteed at ambient temperature of 35°C
4. Product code: T278-D111



ITEM	Hoshizaki Undercounter Refrigerator
MODEL	FT-188MA-S-3D
POWER SUPPLY	1 Phase 230V 50Hz Capacity: 0.65kVA (2.98A)
AMPERAGE	Rated 2.7A
ELECTRIC CONSUMPTION	Motor 400W Heater 397W Refrigeration 399W Defrost 330W
HEAT REJECTION	*W
POWER CORD	2.0m (UK Plug with Earth Wire)
EFFECTIVE CAPACITY	502L
OUTSIDE DIMENSIONS	1800mm (W) x 750mm (D) x 850(-880) mm (H)
INSIDE DIMENSIONS	1440mm (W) x 586mm (D) x 599mm (H)
EXTERIOR	Stainless Steel
INTERIOR	Galvanized Steel (Rear/Bottom)
INSULATION	Stainless Steel, Stainless Pack (Door)
INSULATION FOAM	Polyurethane Foam
BLOWING AGENT	Cyclopentane
REFRIGERATION SYSTEM	Forced Air Circulation
DEFROST SYSTEM	Glass Tube Heater
COMPRESSOR	Hermetic
CONDENSER	Fin and Tube type, Air-cooled
EVAPORATOR	Fin and Tube Type
REFRIGERANT	R404A
TEMPERATURE CONTROL	Microprocessor (Digital Temp Indication) Adjustable from -23 to -7°C
DEFROST CONTROL	Microprocessor controlled
ELECTRIC CIRCUIT PROTECTION	Fuse, Earth Wire
COMPRESSOR PROTECTION	Motor Protector
LEG	Plastic Adjustable 150 to 180mm
SHELF	4pcs.
WEIGHT	Net: 102kg (Gross: Approx. 107kg)
PACKAGE	Carton 1865mm (W) x 830mm (D) x 790mm (H)
ACCESSORIES	-
OPERATING CONDITIONS	Ambient Temperature: 5-38°C Voltage Range: Rated Voltage±6%

*We reserve the right to make changes in specifications and design without prior notice.