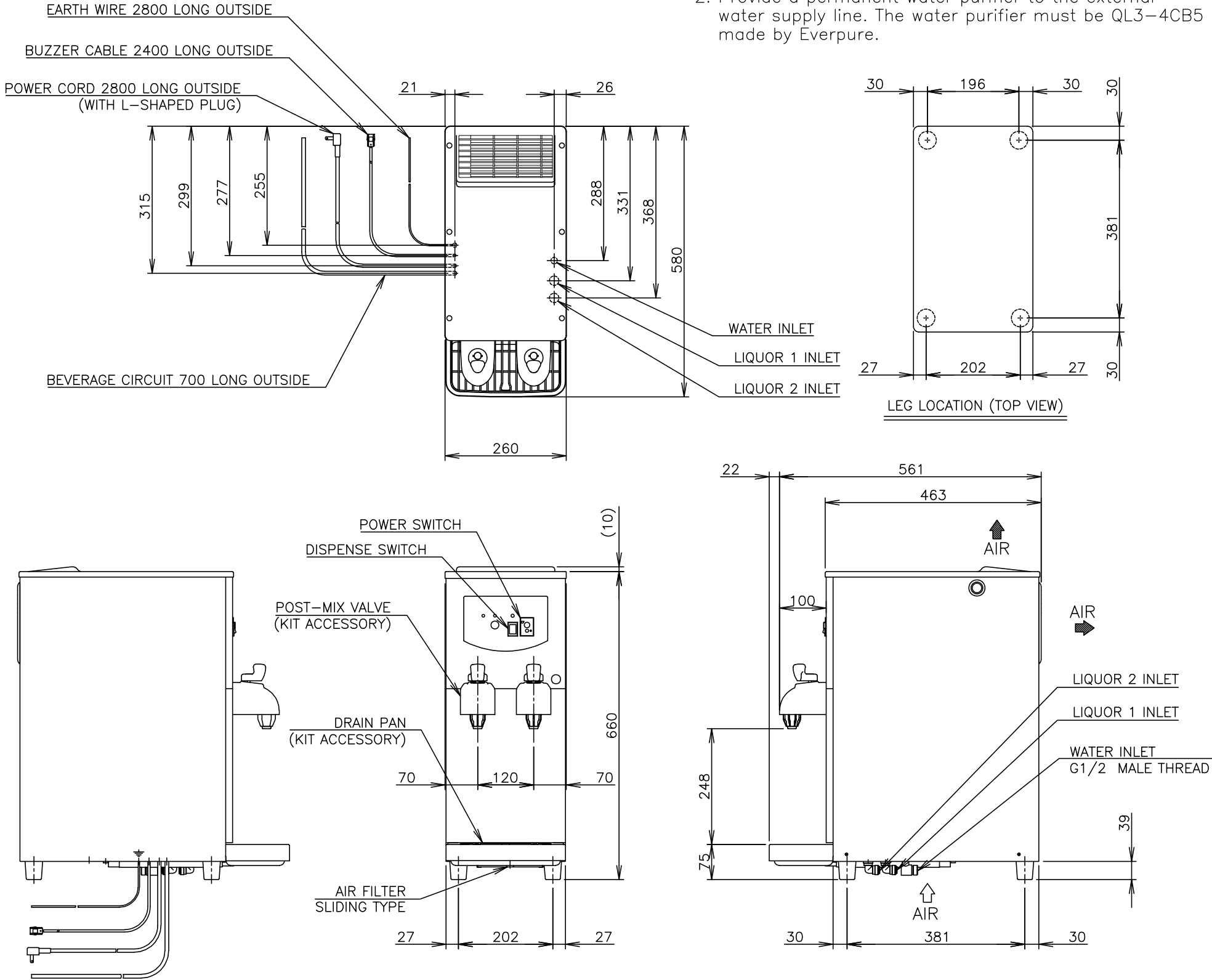


3. This drawing shows a system for countertop application.  
Product code: (Body)W060-C101, (Kit)W063-D002

1. Install the product properly in accordance with the instructions on location, water supply/drain connections and electrical connections stated in the instruction and installation manuals provided. Allow 10mm extra space at the installation site to meet any installation requirements (additional spacing is also required for proper air flow and pipe connections).
2. Provide a permanent water purifier to the external water supply line. The water purifier must be QL3-4CB5 made by Everpure.



△	ITEM	Hoshizaki Carbonated Water Dispenser	
	MODEL	DS-25WLD	
	POWER SUPPLY	1 Phase 100V 50/60Hz Capacity:0.48kVA(4.8A)	
	AMPERAGE	Running: 3.3/3.5A Rated Motor: 3.3/3.5A Starting: 19/19A	
	ELECTRIC CONSUMPTION	250/295W(Power Factor: 76/84%)	
	POWER CORD	2.8m(with L-shaped Plug)	
	OUTSIDE DIMENSIONS	260mm(W) x 580mm(D) x 660mm(H)	
	EXTERIOR	Stainless Steel(Front Panel). Painted Steel(Cabinet) ABS Plastic(Top Panel)	
	BEVERAGE CIRCUIT	2 Carbonated Drink Circuit (2 Carbonated Water, 2 Liquor)	
	DISPENSING CAPACITY	25L(25℃→8℃)/6h(Carbonated Water: Liquor= 2: 1)	
	ICE STORAGE CAPACITY	Approx 4kg	
	PULLDOWN TIME	4.5h or less (Initial Cooling Water 25℃→Ice Storage)	
	RECOVERY TIME	3h or less (Ice Restorage)	
	REFRIGERATION SYSTEM	Ice Bank System	
	AGITATION SYSTEM	Pump Motor Circulation System	
	WATER SUPPLY	Direct Connection to Water Main, G1/2	
	COMPRESSOR	Hermetic 75W	
	CONDENSER	Fin and Tube Type, Air-cooled	
	HEAT REJECTION	400/440W	
	REFRIGERANT CONTROL	Capillary Tube	
	REFRIGERANT	R134a	
ICE STORAGE CONTROL	Electrode	Microprocessor	
CARBONATOR TANK CONTROL	Float		
ELECTRIC CIRCUIT PROTECTION	15A Earth Leakage Circuit Breaker (with Overcurrent Protector), Earth Wire		
REFRIGERANT CIRCUIT PROTECTION	Motor Protector (Auto-reset)		
AGITATOR PUMP MOTOR PROTECTION	Motor Protector (Auto-reset)		
CARBONATOR PUMP MOTOR PROTECTION	Timer (Manual-reset)		
LEG	Rubber		
WEIGHT	35kg (Gross (Body)41kg, (Kit)2kg)		
PACKAGE	Carton (Body) 330mm(W) x 610mm(D) x 870mm(H) (Kit) 300mm(W) x 500mm(D) x 100mm(H)		
ACCESSORIES	CO2 Gas Circuit (Pressure Reducing Valve, Hose, Hose Joint) CO2 Gas Cylinder Fittings (Round Spanner, Chain) Cleaning Utensil (Brush) Water Supply Circuit (Pressure Reducing Valve)		
OPERATING CONDITIONS	Ambient Temperature: : 5 - 35℃,Voltage Range: Rated Voltage ±10% Water Supply Pressure: 0.05 - 0.78 MPa (gauge) CO2 Gas Pressure: 0.54MPa(Carbonator) 0.10 - 0.35MPa(Gas Pump, Gallon Tank)		

\*We reserve the right to make changes in specifications and design without prior notice.